

# ROBOTIC ROLL HANDLING & PALLETIZING



## Advantage - Robotic Automation

Manual roll handling is labor-intensive, inconsistent, and high-risk. Our robotic automated systems eliminate these concerns with a fully integrated solution:

- Reduces labor dependency
- Increases throughput
- Enhances quality control
- Improves operator safety

Our systems offer industry-leading software and advanced vision systems that enhance flexibility and precision across your operations. AMT designs robotic cells with scalability in mind—ensuring your robots remain reusable and easily re-deployable as your product lines evolve.

## → Tailored to Your Operation

- Designed and built by experienced Automation Engineers
- On-site & remote support
- Scalable architecture
- Field-tested in real-world converting operations
- Committed to providing exceptional service

## → Advanced System - Proven Results

Whether modernizing or building new, our team delivers cost-effective solutions and trains YOUR team to operate them.

# ENGINEERED FOR INTELLIGENT MATERIAL FLOW

## Defining Advantages

AMT turnkey systems increase throughput, reduce roll damage, and improve operator safety.

- Handle a variety of roll sizes and weights
- Automatic tool-changer
- Consistent throughput
- Multi-format pallet types supported
- Space-saving layout
- Programmable through HMI or operator pendant
- Can integrate with AMRs for conveyance
- Barcode scanning
- Infeed/outfeed conveyor supports AMRs and forklifts

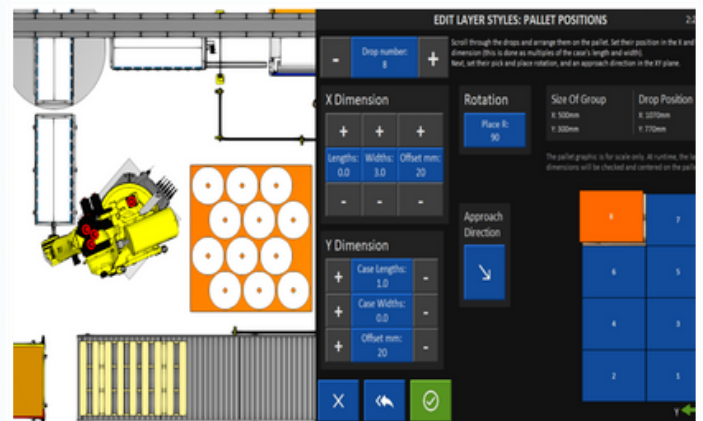


**ABB**

—  
**VALUE  
PROVIDER**

## ➞ Complete System Integration With Current Processes

- Roll Handling
- Shaft Handling
- Core Loading & Positioning
- Roll Wrapping & Packaging
- Palletizing
- Inspection
- Labeling
- Tracking for Order Fulfillment



☎ 248-409-2100  
🌐 [www.appliedmfg.com](http://www.appliedmfg.com)  
✉ [sales@appliedmfg.com](mailto:sales@appliedmfg.com)

